



AN EXHIBITION

ROSIE PHILLIPS
RECENT PAINTINGS AND DRAWINGS
AT NORWICH SCHOOL CRYPT GALLERY

71a The Cathedral Close, NR1 4DD

10 - 15 FEBRUARY 2024

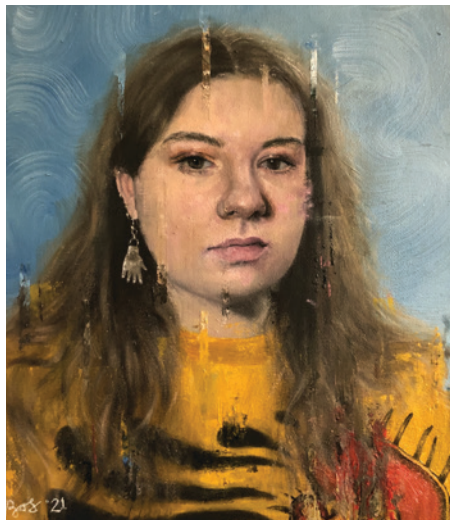
11AM - 5PM [CLOSED SUNDAY]

OPEN DAYS at the Crypt Gallery, Norwich School by appointment
on 5,6 and 7 February - for more details see online

**CONTEMPORARY
ANDCOUNTRY**



Portrait artist **ROSIE PHILLIPS** has been spending time meeting with staff and pupils at Norwich School, as well as members of the community at Norwich Cathedral as part of her residency at the Crypt Gallery. The paintings, drawings, or prints, produced during the period of the residency will be presented in an exhibition *Close*, together with a selection of recent paintings. Rosie's work is an examination of body language and inner emotional states. Her ability to catch fleeting moments, observing the ways in which the human figure naturally establishes itself in response to its environment is key to her observation. She engages with a sense of realism and traditional methods, finding ways to introduce something new; toying with texture, composition and colour, leaning into the creative potential of experiments and chance marks, finding ways to isolate specific details and work them further.



Attention to detail is really important to her and an integral part of her practice. Most of her subjects have been people that she is close to. This has allowed Rosie to communicate expressions and relationships that feel universal, people treasuring and re-remembering moments from their own lives.

“Some stories I would have never heard if it wasn't for my paintings. I want to encourage people from all walks of life to see the magic in these ‘in-between’ moments”.

Curated by Contemporary and Country



CONTEMPORARY ANDCOUNTRY

Contemporary and Country (C&C) present art and handmade objects by emerging as well as established artists and makers from the east of England. We're pleased to be working with The Crypt Gallery at Norwich School in support of this residency by Rosie Phillips. Special thanks to the Headmaster, staff and pupils of Norwich School.

OPEN DAYS at the Crypt Gallery, Norwich School by appointment on 5, 6 and 7 February - see details online

CONTEMPORARYANDCOUNTRY.COM

