



CONTEMPORARY ANDCOUNTRY

Woolmarket House
6 St Nicholas Street, King's Lynn, Norfolk PE30 1LY

OPENING TIMES

WEDNESDAY-FRIDAY: 11am to 4pm

SATURDAY: 11am to 2pm

Our viewing rooms will take place throughout 2025/26,
Open Wednesday to Saturday, **and by appointment at other times.**

We intend to provide visitors with the chance to see work before others, and in an intimate space without the distractions of the larger group exhibitions we put together, or the compromise of a busy private view.

VIEWING ROOMS 2025

CURRENT

OCTOBER, 2025

LINDA JAMIESON, PAINTER
STEVEN WILL, CERAMICS

FUTURE

NOVEMBER, 2025

PETER WYLIE, PAINTER
CAROLYN BROOKES-DAVIES, SHELL ART

DECEMBER, 2025

ROGER HARDY, SCULPTOR, PRINTMAKER
TIM PLUNKETT, WOOD TURNER

PAST

AUGUST, 2025 (VIEW ONLINE)

CAROLINE MACKINTOSH, PAINTER
LAURA HUSTON, CERAMICS

SEPTEMBER, 2025

SIMON CARTER PAINTINGS
ELLA PORTER CERAMIC ART

CONTACT / MAILING LIST

paulvater@contemporaryandcountry.com
07943 291834

paulbarratt@contemporaryandcountry.com
www.contemporaryandcountry.com

LINDA JAMIESON PAINTINGS



Linda Jamieson lives and works on the North Norfolk coast, her home and studio located right on the margins of the North Sea where she is heavily influenced by the impermanence of the landscape and our presence as participants within this fragile environment.

Like many artists, Linda Jamieson asks "How do we make sense of the world around us?"

After many years of working as a professional artist Jamieson remains focused on discovering a greater meaning through her paintings, pastel drawings and prints. For her this striving to reach an elusive destination is much more about recording her journey. After initially

sketching she needs to distance herself from source material and it is in the studio that she has found a new way of working, all she discovers in this process.

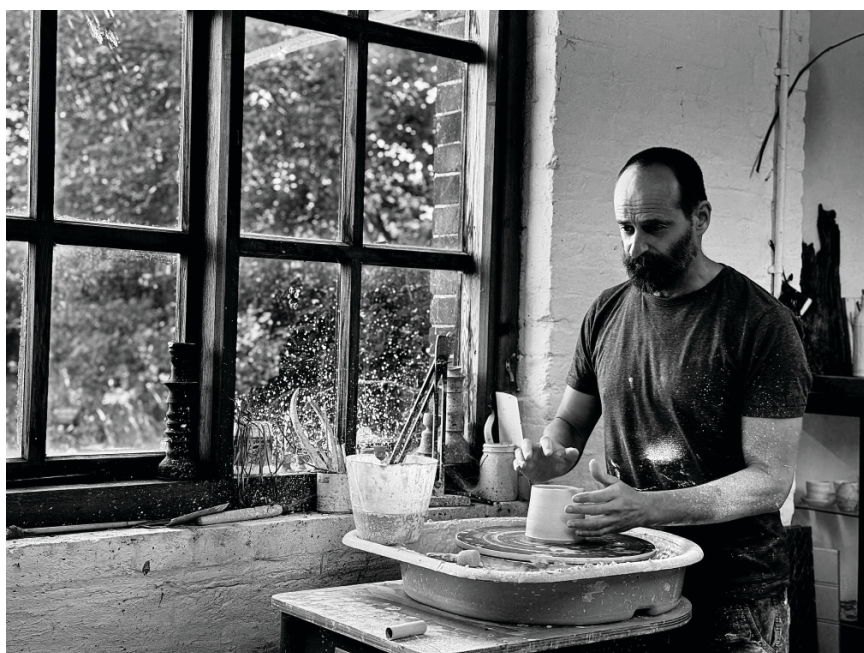
Living on the North Norfolk coast means that Linda is witness to the depredation caused by water on fragile land and coastal habitats. This has always been an underlying presence in her work. Back in her studio, colour has become a primary tool for her in these more recent paintings. She is interested in the ambiguity of their interpretation, there is often a reference to an emotional response in her subject matter, but she steers clear of direct description. Hers is a topology dependant on personal experiences and connections.



**CONTEMPORARY
AND COUNTRY**

Woolmarket House
6 St Nicholas Street
King's Lynn
Norfolk PE30 1LY

STEVEN WILL CERAMICS



Steven Will lives and works between the wild heaths, coast and meandering estuaries of the Suffolk Coast. A connection to and an immersion in nature informs all of his practice. We are showing two sets of work in this viewing room. Firstly a range of beautiful raku vessels made of thrown porcelain, chromium yellow glaze, liquid rubber and Indian ink. His second range of Nerikomi Vessels are made from combining porcelain and black stoneware with added crag which is a Suffolk loose fossil filled sandstone rock from Orford. A material Steven recovers himself from the landscape.

Steven takes an experimental approach to his work and loves to develop and discover new processes. Originally trained in botany,

he discovered ceramics after many years as a market gardener, initially as something to do in the quiet winter season. Art foundation and a distinction from the CityLit Ceramics Diploma followed and he set up a studio near Orford in Suffolk 10 years ago, where he is still based.

Steven's forms are worked out over time, and adjusted as he produces his work in small production runs. Glazes too are recipes he develops and returns to as each new form is finessed. He has a well-balanced, considered way of working. There is nothing forced or fiddly in the finishing of his pots, and yet they seem inevitable in how he fashions each one. His approach results in a sense of discovery in every pot.



**CONTEMPORARY
ANDCOUNTRY**

Woolmarket House
6 St Nicholas Street
King's Lynn
Norfolk PE30 1LY

LINDA JAMIESON PAINTINGS



It's OK to be Different
Mixed media on board
86.5 x 166 cm
£5,900



Dominant Strain
Mixed media on board
Framed 50 x 50 x 4 cm
White painted wooden frame
£1,100



Loony Moony
Mixed media on board
Framed 50 x 50 x 4 cm
White painted wooden frame
£1,100



Splice with Ice
Mixed media on board
Framed 50 x 50 x 4 cm
White painted wooden frame
£1,100

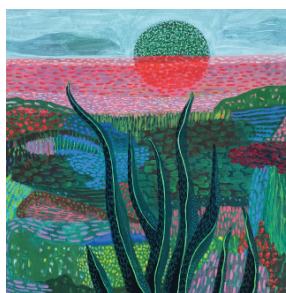


Twice as Nice
Mixed media on board
Framed 50 x 50 x 4 cm
White painted wooden frame
£1,100

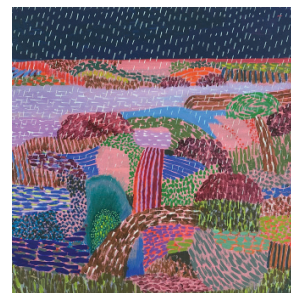
LINDA JAMIESON PRINTS

ALL PRINTS OF ORIGINAL PAINTING (2025)

Giclee print on paper and hand painted to finish making each one unique. All unframed 80 x 80 cm
£950 each



COAST



CREEK

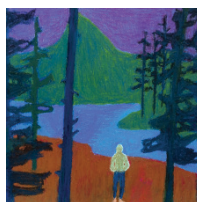


DUNE

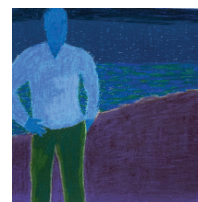


FIELD

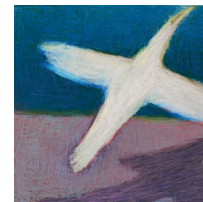
LINDA JAMIESON PASTELS



Alone
Pastel on board
Unframed 30 x 30 cm
£590



Margin
Pastel on board
Unframed 30 x 30 cm
£590



Soar
Pastel on board
Unframed 30 x 30 cm
£590



Night Bird
Pastel on board
Unframed 30 x 30 cm
£590



Pastoral
Pastel on board
Framed 38 x 38 cm
£700



Red Sky Bird
Pastel on board
Framed 48 x 48 cm
£900

STEVEN WILL NERIKOMI VESSELS



Nerikomi Vessel I, 2025

Combination of porcelain and black stoneware with added crag (Suffolk loose fossil filled sandstone rock from Orford)

28 x 17 x 8 cm

£150.00



Nerikomi Vessel II, 2025

Combination of porcelain and black stoneware with added crag (Suffolk loose fossil filled sandstone rock from Orford)

23 x 15 x 7 cm

£125.00



Nerikomi Vessel III, 2025

Combination of porcelain and black stoneware with added crag (Suffolk loose fossil filled sandstone rock from Orford)

21 x 16 x 6 cm

£125.00



Nerikomi Vessel IV, 2025

Combination of porcelain and black stoneware with added crag (Suffolk loose fossil filled sandstone rock from Orford)

24 x 13 x 7 cm

£125.00



Nerikomi Vessel V, 2025

Combination of porcelain and black stoneware with added crag (Suffolk loose fossil filled sandstone rock from Orford)

22 x 11 x 5 cm

£95.00

STEVEN WILL RAKU VESSELS

I to XVI, 2025

Thrown porcelain, chromium yellow glaze, liquid rubber and Indian ink

Approx 8 x 8 cm

£40 each or 3 for £100



I



IX



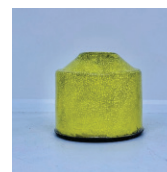
II



X



III



XI



IV



XII



V



XIII



VI



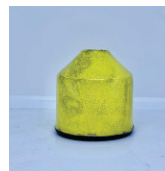
XIV



VII



XV



VIII



XVI