



During the last fifty years John Kiki has developed a rich figurative language that encompasses a fluid abstraction along side a changing caste of characters borrowed from Greek mythology, history genre paintings, and his own observations of how people interact in daily life.

However, the "greatest and most lasting influence" is, in his own words, his teacher, Frank Auerbach, who, together with watercolour artist Patrick Procktor, made him "rethink his strategy," to develop from the tight,

measured style of his early work, into the looser, fluid style which currently typifies his work.

John Kiki's long career has included exhibitions in museums and galleries such as the Royal Academy, Tate, Hayward Gallery, Barbican Gallery, and Serpentine Gallery in London; OK Harris Gallery in Soho, New York and Galerie Wahrenberger in Zurich. The influences on his work are many and varied. There are elements of Jackson Pollock, Francis Bacon, Matisse, Euan Uglow, de Kooning, Baselitz, Picasso, the abstract expressionists.

"John Kiki is a very unusual artist. Unusual, not for his clear and immediately recognizable way of painting, but because he emerged, painting in his distinctive way, when he left art school fifty years ago."

Keith Roberts, John Kiki: Fifty Years in the Figurative Fold



**CONTEMPORARY
ANDCOUNTRY**

JOHN KIKI DRAWINGS

Woolmarket House

6 St Nicholas Street, King's Lynn, Norfolk PE30 1LY

www.contemporaryandcountry.com



CONTEMPORARY
ANDCOUNTRY

JOHN KIKI DRAWINGS

Woolmarket House

6 St Nicholas Street, King's Lynn, Norfolk PE30 1LY

www.contemporaryandcountry.com



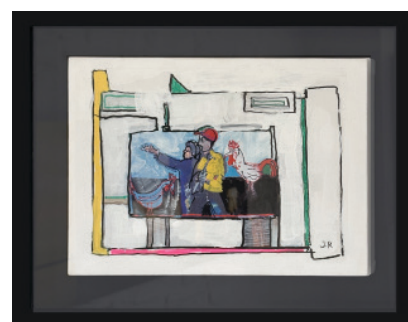
At the Exhibition, 2022

Collage and acrylic on canvas
Framed in black painted wood frame
with non-reflective museum glass
Framed 31 x 31 x 3.5 cm
£1,750



Bronco Bill, 2022

Etching and acrylic on canvas
Framed in black painted wood frame
with non-reflective museum glass
Framed 40 x 40 x 4.5 cm
£1,950



Chickens, 2024

Collage and acrylic on canvas
Framed 36 x 46 x 3.5 cm
Black painted wood frame, glazed
£ 2,250.00



Circus Horse and Rider, 2024

Collage and acrylic on canvas
Framed 54 x 47 x 4.5 cm
Black painted wood frame, glazed
£2,750



Cousin Sally, 2021

Acrylic on canvas
Framed in black painted wood frame
with non-reflective museum glass
Framed 40cm x 30cm x 7cm
£1,750



Dancing Queen, 2021

Acrylic on canvas
Framed in black painted wood frame
with non-reflective museum glass
Framed 45cm x 40cm x 7cm
£2,250



CONTEMPORARY
ANDCOUNTRY

JOHN KIKI DRAWINGS

Woolmarket House

6 St Nicholas Street, King's Lynn, Norfolk PE30 1LY

www.contemporaryandcountry.com



Dressed to Thrill, 2021

Acrylic on canvas

Framed in black painted wood frame
with non-reflective museum glass

Framed 30cm x 30cm x 7cm

£1,650



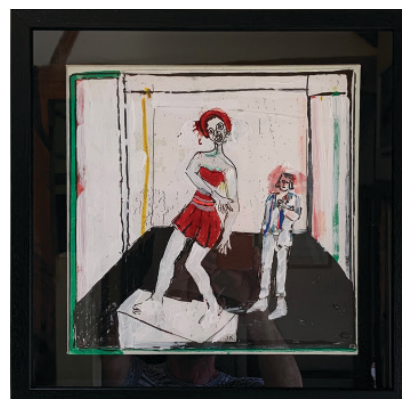
Go-Go-Orange, 2021

Acrylic on canvas

Framed in black painted wood frame
with non-reflective museum glass

Framed 41cm x 41cm x 7cm

£2,250



Go-Go-Red, 2021

Acrylic on canvas

Framed in black painted wood frame
with non-reflective museum glass

Framed 41cm x 41cm x 7cm

£2,250



Infanta and Friend, 2024

Collage and acrylic on canvas

Framed 54 x 47 x 4.5 cm

Black painted wood frame, glazed

£2,750



Private View #1, 2021

Mixed media and acrylic on canvas

Framed in black painted wood frame
with non-reflective museum glass

Framed 45cm x 40cm x 7cm

£1,950



Resting with Dog, 2022

Collage and acrylic on canvas

Framed in black painted wood frame
with non-reflective museum glass

Framed 39.5 x 34.5 x 4.5 cm

£1,950



CONTEMPORARY
ANDCOUNTRY

JOHN KIKI DRAWINGS

Woolmarket House

6 St Nicholas Street, King's Lynn, Norfolk PE30 1LY

www.contemporaryandcountry.com



The Portrait of the Friends, 2024

Collage and acrylic on canvas

Framed 47 x 32 x 4.5 cm

Black painted wood frame, glazed

£2,550



Under Starters, 2021

Mixed media and acrylic

Framed in black painted wood frame

with non-reflective museum glass

Framed 45cm x 40cm x 7cm

£2,250